



AUGATHELLA STATE SCHOOL NEWSLETTER

Motto: Strive to Succeed

Principal: Natalie Newell

Teachers: Natasha Wade, Bronia Cameron, Elizabeth Lindsay

Teacher Aides: Jan Zohl, Emily Briggs, Brooke Blacker

Administration Officer: Kym Fields

Postal Address: PO Box 33, Augathella, QLD, 4477

Phone: (07) 4654 5120

Website: augathellass.eq.edu.au Email: principal@augathellass.eq.edu.au

Newsletter Number - 15

Date - 14th May 2024

Quote of the Week

"There is no failure, only feedback" - Robert Allen

Premier's Reading Challenge

Ready, set, read...Our school has registered to take part in the 2024 Premier's reading challenge. The Premier's Reading Challenge is an annual statewide initiative for Queensland state and non-state schools and home-educated students from Prep to Year 9, as well as children (aged up to 5 years) enrolled in an early childhood centre. The Premier's Reading Challenge aims to improve literacy and encourage children to read for pleasure and learning. In 2023, more than 2 million books were read by more than 160 000 Queensland children and students from nearly 1000 schools and 340 early childhood centres. The challenge is now open and doesn't close until the 23rd August. We will share details with students and families later this week when we send reading logs home.



National Walk Safely to School Day

All primary school-aged children around Australia are invited to participate in National Walk Safely to School Day 2024. Walk Safely to School Day aims to encourage each Australian child to lead a healthier, more active lifestyle by including a walk at the beginning and end of each day to achieve at least 60 minutes of daily exercise to help prevent obesity and other health problems. The event also promotes reduced car-dependency, cleaner air, improved diets and road safety to primary school children throughout Australia.

On **Thursday 16th May**, students will have the opportunity to participate in our National Walk Safely to School Day. Students are asked to meet at **Meatant Park by 8:15am** where they will then walk together to school as part of the initiative. Students will discuss road signs and follow safe road practices as they walk to school. We look forward to providing our students the opportunity to participate in the National Walk Safely to School Day and thank Tanya for supporting our students in this initiative.



Topology

Topology is a musical organisation based in Brisbane. They believe that everyone is creative and that cultivating creative thinking should start in the classroom – this is why they are passionate about music education and creating new music with young musicians. Jade Montgomery has visited our school on 2 previous occasions to work with our students to create original pieces of work. Next Monday on 20th May we have Jade and Topology re-visiting us to work once again with our students. The purpose of this visit is to specifically record and film students performing their songs. For this to happen, parent consent will be needed for students to participate in the activity. We anticipate that filming may also possibly take place at venues around town (eg. The river, Meat Ant Park) so we will also be seeking parent permission for students to leave the school grounds and walk to other possible venues. Please keep an eye out for letters later this week and we are very excited to engage in this opportunity for our students to showcase their creative musical talents.

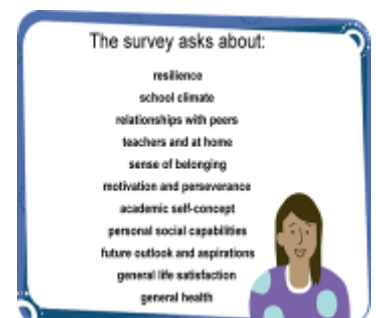
Queensland Engagement and Wellbeing Survey

We know that wellbeing and engagement are important parts of your child's life at school. The department and our school are looking at ways to collect information on these important areas so we can support our students in the best way possible.

The Queensland Engagement and Wellbeing (QEW) Survey is designed to measure how state school students view their wellbeing and engagement.

Results from this survey will tell us about students' levels of wellbeing and engagement. This information will allow us to better support our students and meet their needs.

Students in Year 4 – 6 completed the survey last week so we look forward to receiving their results later this term.



Natalie Newell, Principal.

